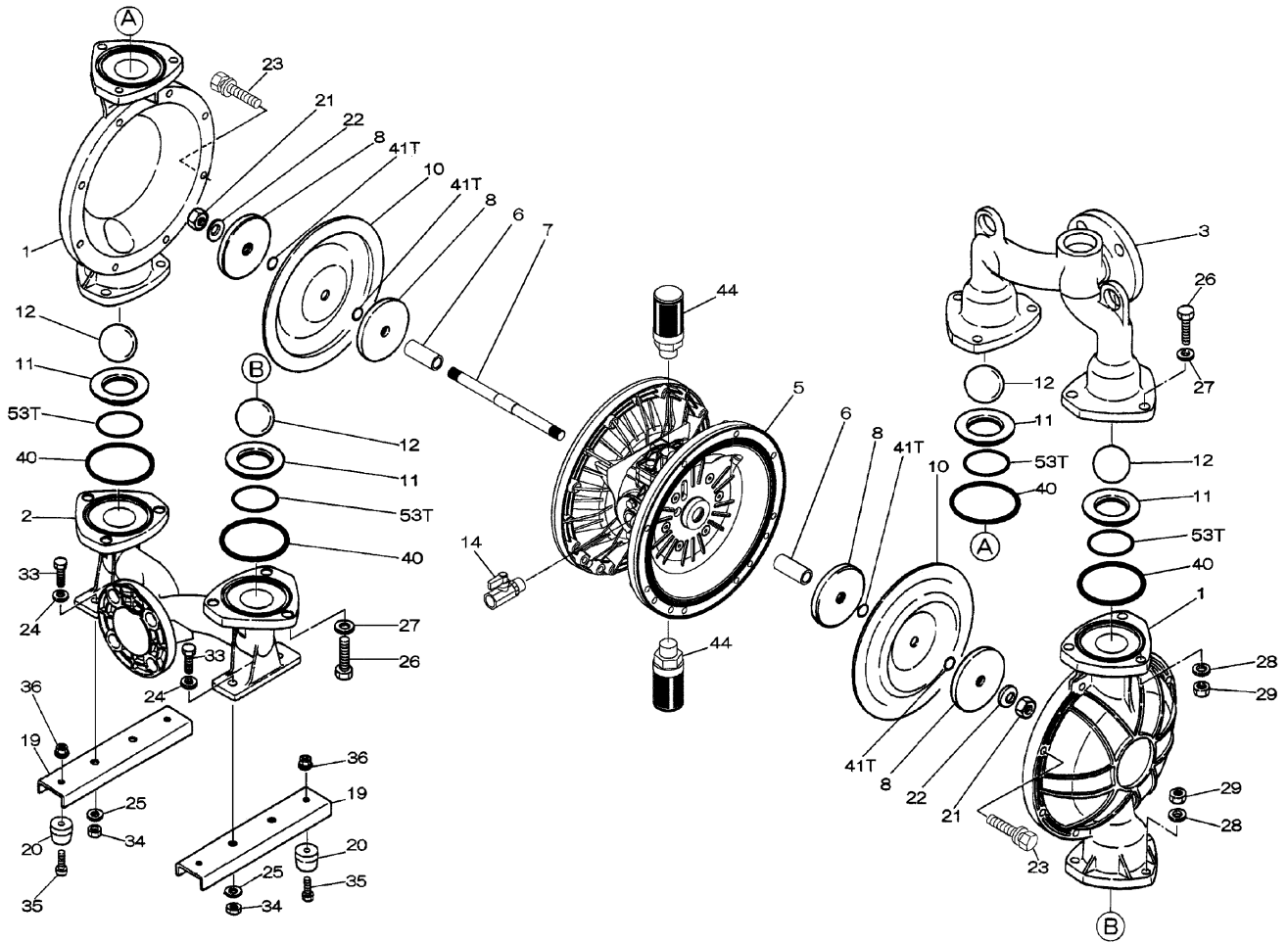


EXPLODED VIEW & PARTS LISTING

Model: DP-50BAT-HD (XDP)
Model #: 854415

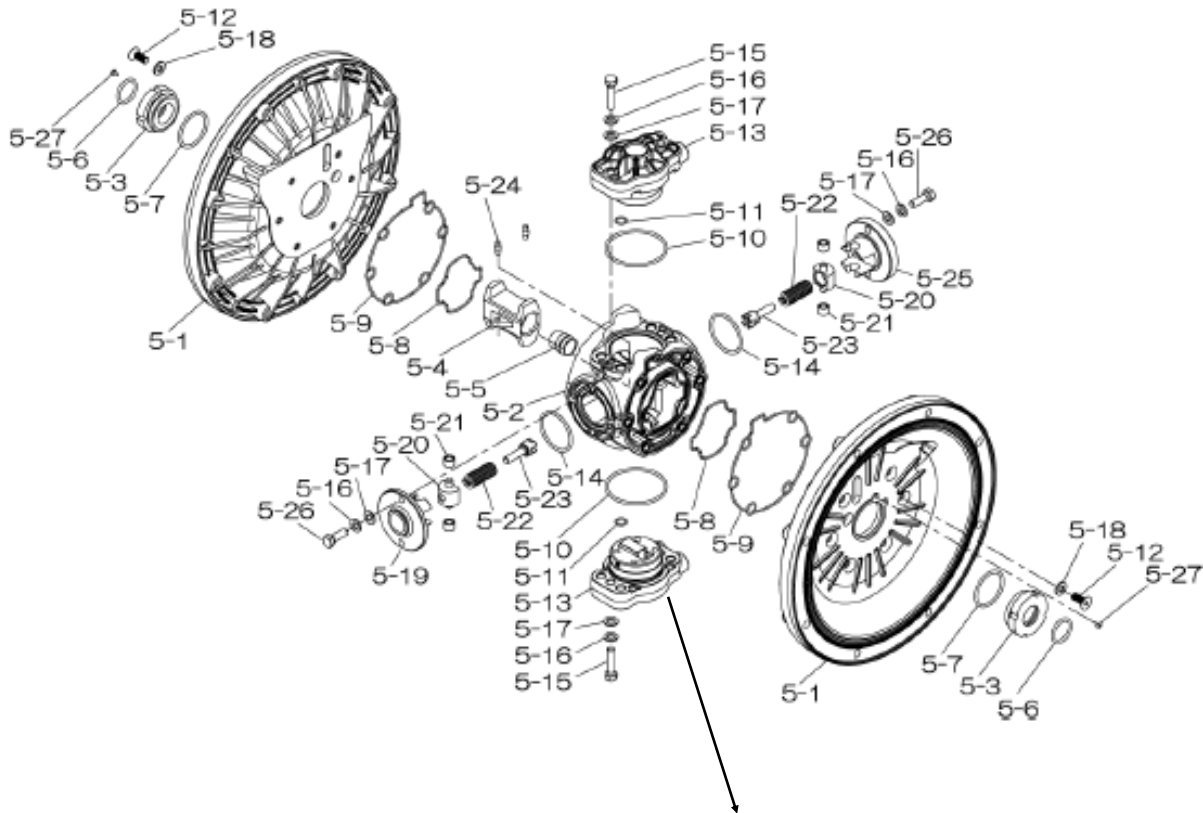


Air Operated Double Diaphragm Pump

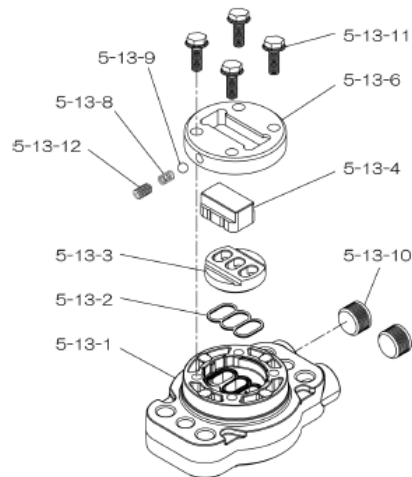


Air Operated Double Diaphragm Pump

804853 Center Body Assembly



804784 Valve Body Assembly

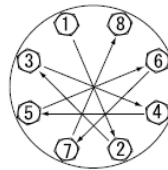


Air Operated Double Diaphragm Pump

REF NO.	PART NO.	DESCRIPTION	QTY.	REORDER
1	580961	OUT CHAMBER		
2	714369	IN MANIFOLD		
3	714363	OUT MANIFOLD		
5	804853	CENTER BODY ASSY		
5-1	716247	AIR CHAMBER		
5-2	716256	BODY		
5-3	773095	THROAT BEARING		
5-4	716214	SHUTTLE		
5-5	773047	CENTER ROD GUIDE		
5-6	640023	O RING		
5-7	640133	O RING		
5-8	773040	GASKET		
5-9	773041	GASKET		
5-10	640138	O RING		
5-11	640007	O RING		
5-12	683812	FLAT SOCKET		
5-13	804784	VALVE BODY ASSY		
5-13-1	716244	VALVE BODY		
5-13-2	773047	GASKET		
5-13-3	716246	SEAT		
5-13-4	773425	BLOCK		
5-13-6	773426	GUIDE PLATE		
5-13-8	706612	SPRING INK		
5-13-9	686271	BALL		
5-13-10	772934	PLUG		
5-13-11	602300	TAPPING BOLT		
5-13-12	610025	HEX SOCKET HEAD SCREW		
5-14	640134	O RING		
5-15	611153	BOLT		
5-16	631420	SPRING WASHER		
5-17	631013	WASHER FLAT		
5-18	684987	WASHER		
5-19	716249	RETAINER		
5-20	713620	SPRING GUIDE		
5-21	773067	BUSH		
5-22	684537	SPRING		
5-23	714446	TRIP ARM		
5-24	700231	PIN		
5-25	716216	RETAINER		
5-26	611149	BOLT		
5-27	686337	TAPPING SCREW		

REF. NO.	PART NO.	DESCRIPTION	QTY.	REORDER
6	716399	CENTER BUSH	2	
7	716404	CENTER ROD	1	
8	707822	CENTER DISK	4	
10	770815	DIAPHRAGM	2	
11	712383	VALVE SEAT	4	
12	770693	BALL	4	
14	686974	BALL VALVE	1	
19	711928	BASE 50	2	
20	771402	FOOT RUBBER	4	
21	706128	NUT	2	
22	682740	WASHER	2	
23	686162	BOLT	16	
24	631014	WASHER FLAT	4	
25	631917	WAVE WASHER	20	
26	611203	BOLT	12	
27	631015	WASHER FLAT	12	
28	631918	WAVE WASHER	12	
29	627014	NUT	12	
33	611175	BOLT	4	
34	627013	NUT	4	
35	611149	BOLT	4	
36	682276	NUT W/FLANGE	4	
40	643069	O RING	4	
41T	643015	O RING	4	
44	804697	MUFFLER	2	
53T	643139	O RING PTFE	4	
KIT	K50-MT	LIQUID SIDE KIT		
KIT	K45-AM-DP-HD	AIR MOTOR KIT		

Torque Requirements:



Tightening torque for center rod and out chambers.
Center Rod 43 ft-lbf {60 N-m}
Out Chambers 29 ft-lbf {40 N-m}

Tightening torque for manifold retainer bolts.
BAT 18 ft-lbf {25 N-m}

General Tools:

- Socket wrench - 24mm
- Hexagonal box wrench - 5mm, 6mm
- Open-end wrenches - 19mm, 24mm
- Phillips head screw driver

Special Tools:

- Socket (804129) for a guide to remove the throat bearing (sold separately)

Miscellaneous:

- Assembly Oil - Turbine oil none additional class 1 (equivalent to ISO VG32 grade)
- Nuts - M16 x 1.5
- Thread locker
- Urea grease grade (NLGI) No. 2, Shell Alvania Grease S1

Customer Notes

Model #: _____
Description: _____
Serial #: _____
Date Installed: _____
Department Location: _____
Tag/Project: _____